

FIRST FLOOR PLAN (ENLARGEMENT)

STRATA PLAN
68654

SHEET 09 OF 18 SHEETS



MNG Ref.: 987765P-0011

AS TO THIS SHEET ONLY:
THE BOUNDARIES OF THE LOTS OR PARTS OF THE LOTS, WHICH ARE BUILDINGS SHOWN ON THE STRATA PLAN ARE THE INNER SURFACES OF THE WALLS; THE UPPER SURFACE OF THE FLOOR AND THE UNDER SURFACE OF THE CEILING, AS PROVIDED BY SECTION 3(2)(A) OF THE STRATA TITLES ACT 1985.

THE STRATUM OF THE CARBAY'S EXTENDS FROM THE UPPER SURFACE OF THEIR FLOOR TO THE UNDER SURFACE OF THEIR CEILING.

ALL STRUCTURAL CUBIC SPACE AND WALLS EXTERNAL TO THE BUILDING ARE COMMON PROPERTY.

ALL DIMENSIONS FROM BUILDINGS ARE FROM FACE OF WALLS UNLESS OTHERWISE STATED.

ALL ANGLES ON THE PLAN ARE MULTIPLES OF 45° UNLESS DEFINED BY STRUCTURES, PARCEL BOUNDARIES OR OTHERWISE STATED.

CB = CARBAY

S = STORE

█ = PILLAR (COMMON PROPERTY)

FOR OTHER PARTS OF LOTS 2, 3, 98-100 (incl), 102 AND 104 SEE SHEET 10 OF 18 SHEETS

FOR OTHER PARTS OF LOTS 105 AND 114 SEE SHEET 11 OF 18 SHEETS

FOR OTHER PARTS OF LOT 120 SEE SHEET 12 OF 18 SHEETS

FOR OTHER PARTS OF LOTS 130 AND 131 SEE SHEET 13 OF 18 SHEETS

FOR OTHER PARTS OF LOTS 136, 140, 142 AND 143 SEE SHEET 14 OF 18 SHEETS

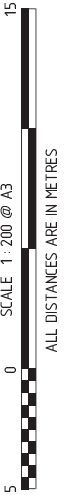
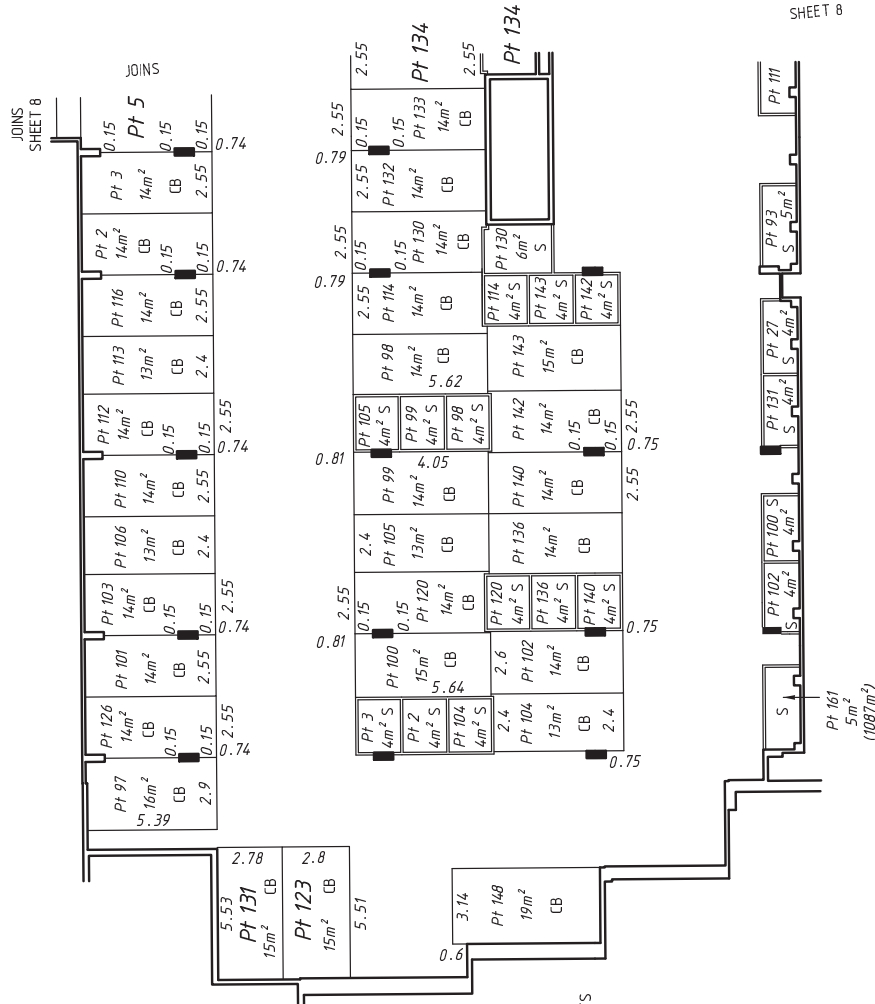
FOR OTHER PARTS OF LOTS 27 AND 116 SEE SHEET 8 AND 12 OF 18 SHEETS

FOR OTHER PARTS OF LOTS 97, 101 AND 103 SEE SHEET 8 AND 10 OF 18 SHEETS

FOR OTHER PARTS OF LOTS 106, 112 AND 113 SEE SHEET 8 AND 11 OF 18 SHEETS

FOR OTHER PARTS OF LOTS 126, 132 AND 133 SEE SHEET 8 AND 13 OF 18 SHEETS

FOR OTHER PARTS OF LOT 148 SEE SHEET 8 AND 15 OF 18 SHEETS



STRATA PLAN
68654

SHEET 10 OF 18 SHEETS



MNG Ref.: 987765P-0011

SECOND FLOOR PLAN

AS TO THIS SHEET ONLY:
THE BOUNDARIES OF THE LOTS OR PARTS OF THE LOTS WHICH ARE BUILDINGS SHOWN ON THE STRATA PLAN ARE THE INNER SURFACES OF THE WALLS; THE UPPER SURFACE OF THE FLOOR AND THE UNDER SURFACE OF THE CEILING, AS PROVIDED BY SECTION 312(A) OF THE STRATA TITLES ACT 1985.

THE BOUNDARIES OF THE BALCONIES ARE FROM THE EXTERNAL SURFACE OF THE BUILDING TO THE INNER SURFACE OF THE BALCONY WALLS, OR THE INNER SURFACE OF THE BALUSTRADING, UNLESS OTHERWISE STATED.

THE STRATUM OF THE BALCONIES EXTENDS FROM THE UPPER SURFACE OF THE BALCONY FLOOR TO THE UNDER SURFACE OF THE BALCONY CEILING, OR WHERE NOT COVERED, TO THE PROJECTION OF THE UNDER SURFACE OF THE ADJOINING BUILDING LOT CEILING.

THE BOUNDARIES OF THE TERRACES ARE FROM THE EXTERNAL SURFACE OF THE BUILDING TO THE INNER SURFACE OF THE TERRACE WALLS, OR THE INNER SURFACE OF THE BALUSTRADING, UNLESS OTHERWISE STATED.

THE STRATUM OF THE TERRACES EXTENDS FROM THE UPPER SURFACE OF THE TERRACE FLOOR TO THE UNDER SURFACE OF THE TERRACE CEILING, OR WHERE NOT COVERED, TO THE PROJECTION OF THE UNDER SURFACE OF THE ADJOINING BUILDING LOT CEILING.

ALL STRUCTURAL CUBIC SPACE AND WALLS EXTERNAL TO THE BUILDING ARE COMMON PROPERTY.

THE STRATUM OF PT 162 EXTERNAL TO THE BUILDING EXTENDS FROM THE UPPER SURFACE OF THE FLOOR TO A HEIGHT OF 200 METRES A.H.D.

B - BALCONY

T - TERRACE

FOR OTHER PARTS OF LOTS 1, 4, 6 AND 7 SEE SHEET 7 OF 18 SHEETS
FOR OTHER PARTS OF LOTS 5, 8-11 (incl) AND 96 SEE SHEET 8 OF 18 SHEETS
FOR OTHER PARTS OF LOTS 2, 3, 98-100 (incl), 102 AND 104 SEE SHEET 9 OF 18 SHEETS
FOR OTHER PARTS OF LOTS 97, 101 AND 103 SEE SHEETS 8 AND 9 OF 18 SHEETS

